

A message from Andy Wilkinson Managing Director, Ede+Wilkinson

Welcome to the second edition of **NE+WS**.

It's been a busy few months here, having now completed works at the Ashford Combined Engineering Depot project, which I am pleased to say were finished on time and within the £3million budget. This has been successfully handed over to the client, who is very happy with the outcome. We are also continuing our current mainframe contract until April 2013, dealing with the reactive maintenance and PPM, which covers the South East territory, Norfolk - Devon, including London.

Plus, the London 2012 Olympics and Paralympics didn't pass us by here at ewg; in fact, we dealt with a number of preparation projects in the run up to the phenomenal games. See our case studies below for more details.

Finally, I would like to thank all our clients and delivery teams who entrust us with the key works, and also our suppliers who once again have stepped up the pace, proven delivery and have greatly supported us during this busy period.

Best wishes,

Andy Wilkinson,
Managing Director



Andy Wilkinson, Managing Director.

An Olympic Welcome

We were pleased to make our mark with the London 2012 games by managing visual enhancement works at Liverpool Street Station. Our construction team not only installed steel corner covers at key points in the station, but have also undertaken works to various columns, improving the ambience of the station at this high profile time, as well as installing colourful banners on the trackside, in the run up to the station.



Lea Valley Water Park

Another project related to the Games was at the Lea Valley Water Park, whereby we were tasked with creating a temporary walkway from Cheshunt Station directly to the park. The walkway provided safe public access to the white water rafting centre and was completed in approx 38 days, finishing well within the time scale. We undertook the project with A&D Civils and our scaffold suppliers No 1.



Plain Sailing with ewg

We were proud to sponsor Portsmouth University's 'Portsmouth Plum' team, in the British Universities & Colleges Sport (BUCS) and British Universities Sailing Associations' (BUSA) Yachting Championships for 2012.

Four days of intense racing took place in the Solent, which culminated in Portsmouth Plum reaching an impressive second place, only three points behind Team Exeter, out of twenty-nine teams.

Each team of eight sailors took part in the unique event of eight races, including two coastal courses. Portsmouth Plum, which is led by Ed Impey, won three of the eight races.

Ed's crew included Ollie Clarke, Neil Payne, Harry Houlding, Hattie Poulter, Nicola McLaughlin, Tom Foster and Liam Gardner. They are pictured having been awarded with the Jim Saltonstall Teapot Trophy.



Supplier Spotlight

In this new section, we will profile a key supplier to ewg.

In this edition we focus on **DJS Ltd**:

Who is DJS?

DJS Ltd is a specialist in security installations and access control. The team operates across the South East and are approved contractors for the Ministry of Defence and National Rail.

How do we work with them?

DJS supports us at ewg 24/7 with reactive calls in addition to supporting our PPM regime and the installation division.

Why do we work with them?

Works are always to a very high standard and the team takes a proactive approach to meet the requirements of our clients' needs. We highly recommend this company.

Website:

www.djsltd.co.uk

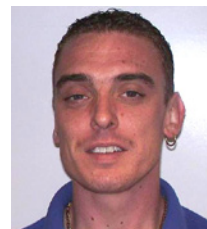


ewg provides a range of CCTV and security systems

Meet The Team

In each edition of NE+WS, we introduce you to members of our team and ask them some questions about themselves. Here, we take the opportunity to introduce you to some members of the operations team:

Who: Tony Parkes
Title: Minor Planned Works Manager
Role: Coordinating Daily Works
Likes: Manchester United
Dislikes: Early Mornings
Time at ewg? 15 Years



Tony Parkes

Who: Jim Flatt
Title: Reactive Manager
Role: Overseeing reactive maintenance work
Likes: Red wine
Dislikes: Doing a job twice
Time at ewg? 4 years



Jim Flatt

Who: Theresa Gibbons
Title: Accounts Manager
Role: Purchase Ledger
Likes: Freshly made coffee from Costa Coffee
Dislikes: Filing
Time at ewg? 14 Years



Theresa Gibbons

Ely MDU Depot Project Completed

Network Rail commissioned us to enhance the entry and exit points at Ely Station's MDU Depot. This was to include a new pathway, installation of security gates and increasing lighting levels for enhanced health and safety.

This project was a joint venture between our civils and electrical divisions and required a high level of planning and co-ordination as the client needed to maintain 24hr access to the site for over 100 local staff, as this is a key location.

The area had traditionally been a dark area which had been identified and reported via the correct reporting procedures, we therefore took a proactive approach to address this issue and liaised with local representatives to gain a full understanding of their requirements. By doing so, this helped us to design and install the works to meet with the clients' specific requirements.



Apprenticeships Update

We are pleased to announce that Craig Taylor and Tony Clark have both successfully completed their first year at Colchester Institute studying electrical engineering. They are now looking forward to year two. In addition, Jamie Harris from our Southern division has also completed year one electrical at Brighton; he too will be returning to complete his second year.

Finally, we would like to congratulate Dan Whatford from our Southern division, who has successfully passed his final exams on Plumbing and is now fully qualified. A fantastic achievement - well done Dan!

Helen Rollason
Cancer Charity

Garden Makeover

Another charity event that the team has been involved with is a garden makeover project at the Helen Rollason Cancer Charity's new support centre in Chelmsford. We donated our time and materials to help transform the garden into an area that clients are able to relax in, during the warmer months. A plaque was also donated, which is now on the finished site for all to see.



Helen Rollason Cancer Charity Golf Day



In July, four teams from **ewg** entered into the Helen Rollason Cancer Charity golf day at Colne Valley Golf Club. As well as taking part in the charity event, we also sponsored the 10th hole and were pleased to raise over £1,000 for the worthy charity. Pictured from left to right; Andy Pulford, the Area Sales Director of Rexel Senate; Steve Harris, ewg's Southern Manager; and Wayne Sweetman, Uni-Safe key supplier

The Railway Children

At **ewg**, we continue to support the Railway Children, which is an



international children's charity. The charity works on projects in India, the UK and East Africa and its primary aim is to change the lives of children living on the streets.

Since the beginning of the year, we have donated £250 to this worthy charity and will continue to support the organisation in the future. More details can also be found online: www.railwaychildren.org.uk

Fun Fact

ewg's client-specific IT server now provides 24/7 access to key records and documentation – currently in excess of 120,000 documents.

Stop Press!

Are you up to date with your Portable Appliance Testing? There is a Duty of Care to your employees who use your equipment and plant and so make sure your appliances are routinely tested to ensure they are safe and your business is compliant.

Case Studies (Planned Works)

Here is a selection of works we have recently carried out for our clients; all highlight the prompt service we provide and the focus on completing the work to our best abilities:

Ticket Vending Machines

We have successfully installed 28 new Ticket Vending Machines across 20 locations in East Anglia. This included the installation of power, route work data and the machine bases. We delivered both on time and on budget for our client Greater Anglia (Abelio), the rail franchise operator.



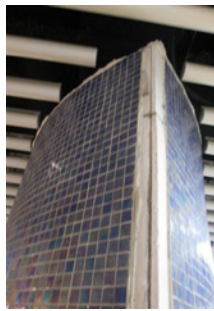
Audley End



Norwich

Stainless Steel Works

We were asked to make repairs to a number of walls at Liverpool Street Station that had become scuffed or damaged from luggage and the high volume of commuters that travel through the station each day. We therefore sourced, manufactured and installed a number of stainless steel panels to key areas in the station to help protect the heavily-used areas from further damage in future.



Before



After



Before



During



After

Don't Forget!

Employers or anyone who has some control over commercial premises must take reasonable steps to reduce the risk from fire and make sure people can safely escape if there is a fire. It is a legal obligation. Therefore, we work with our clients to ensure they comply with the current fire regulations. This includes installing, testing and maintaining fire safety equipment, including complete fire alarm systems through to appropriate extinguishers.

Rebranding Project

By now, you would have seen our new **ewg** logo and branding, including on our website, on our liveried vans and trucks, as well as on our staff uniforms. Now, the final phase of the rebranding project is underway to complete the company rebrand. This includes refurbishing our Head Office in Colchester to incorporate the new look.



ewg commitment

- We are highly responsive to our client's needs - on call 24/7
- We focus on delivering on our promises and to exceeding our customer's expectations
- We have earned a reputation for quality, safety and service
- We work hard at maintaining our reputation by employing the best skilled people, investing in state-of-the art equipment and sourcing the best materials available.

www.ewg ltd.com



NIC EIC Approved Contractor
Electrical Contractors' Association
GAS Safe Register • ISO 9001 Registered
Link Up No. 13664



Contact Us

If you have any queries about any stories published in the newsletter or any other related **Ede+Wilkinson Group** information, please contact a member of the team at our Eastern headquarters: **01206 213279**

Newsletter Items

If you feel you have a news story that would be of interest to our readers, please forward contributions directly to our newsletter coordinator: **ange.blinman@ewg ltd.com**